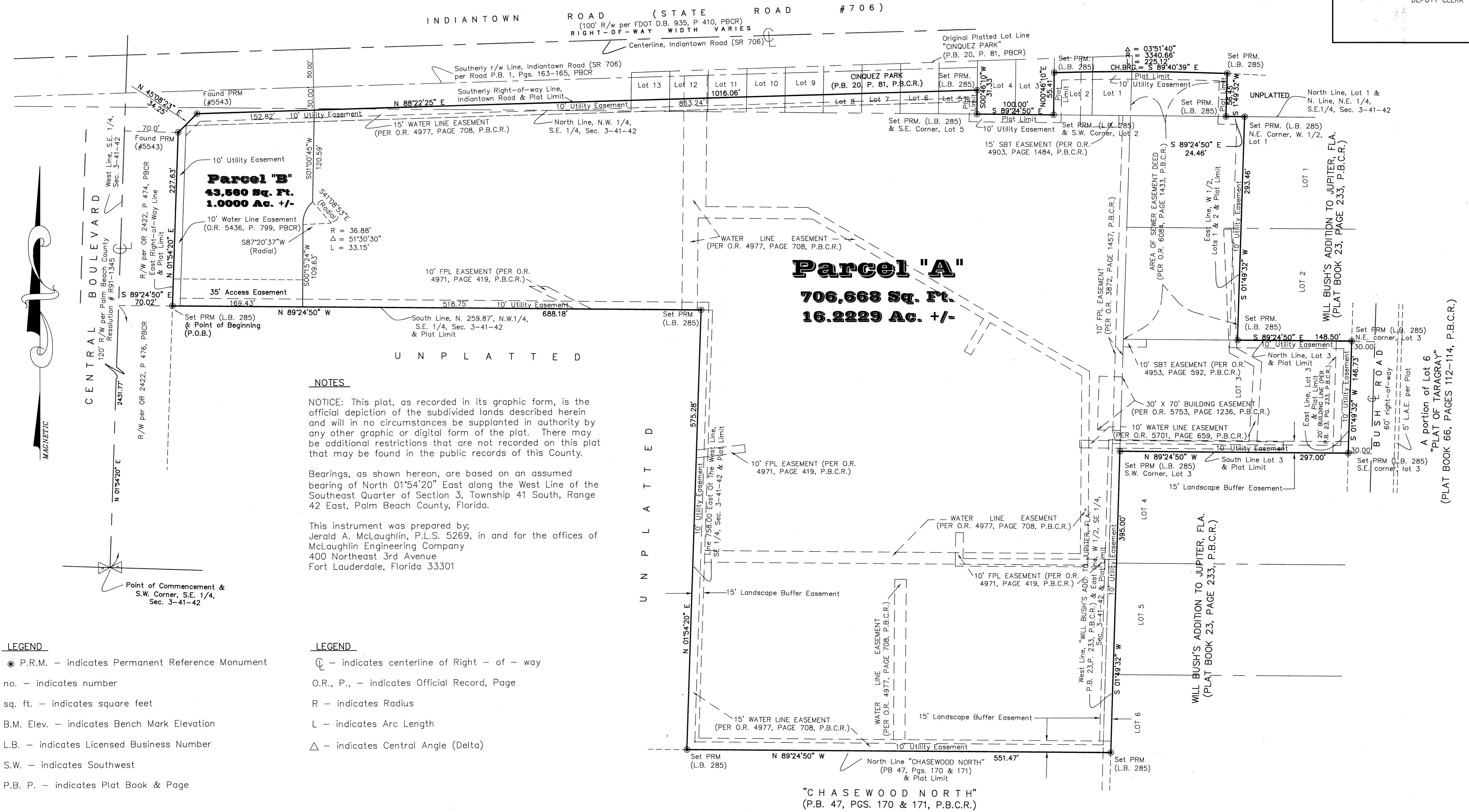
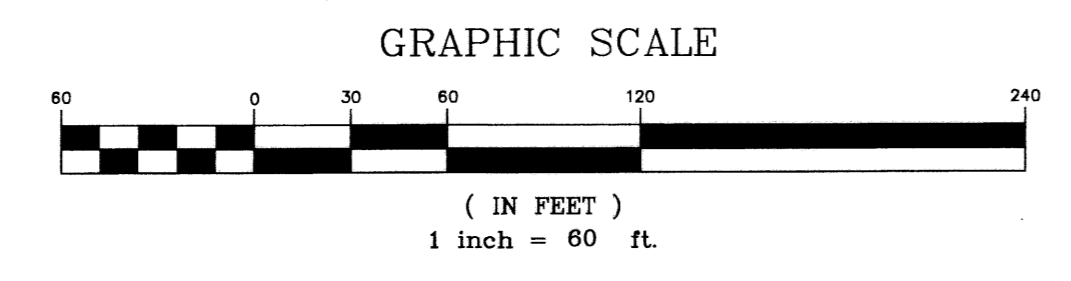


"CHASEWOOD PLAZA"
BEING A REPLAT OF A PORTION OF LOTS 1, 2 AND 5 THROUGH 13,
"CINQUEZ PARK", AS RECORDED IN PLAT BOOK 20, PAGE 81,
AND BEING A REPLAT OF A PORTION OF LOT 1 AND 2, AND ALL OF LOT 3
OF "WILL BUSH'S ADDITION TO JUPITER, FLORIDA",
AS RECORDED IN PLAT BOOK 23, PAGE 233,
BOTH AS RECORDED IN THE PUBLIC RECORDS OF PALM BEACH COUNTY, FLORIDA
AND A PORTION OF THE EAST ONE-HALF (E. 1/2)
SECTION 3, TOWNSHIP 41 SOUTH, RANGE 42 EAST
TOWN OF JUPITER, PALM BEACH COUNTY, FLORIDA
AUGUST, 2002
SHEET 2 OF 2 SHEETS

STATE OF FLORIDA)
) SS
 COUNTY OF PALM BEACH)
 THIS PLAT WAS FILED FOR RECORD
 AT _____ THIS _____ DAY
 OF _____, 20____
 AND DULY RECORDED IN PLAT BOOK
 NO. _____ ON PAGES _____
 DOROTHY WILKEN
 CLERK OF THE CIRCUIT COURT
 BY: _____ DEPUTY CLERK



NOTES

NOTICE: This plat, as recorded in its graphic form, is the official depiction of the subdivided lands described herein and will in no circumstances be supplanted in authority by any other graphic or digital form of the plat. There may be additional restrictions that are not recorded on this plat that may be found in the public records of this County.

Bearings, as shown hereon, are based on an assumed bearing of North 01°54'20" East along the West Line of the Southeast Quarter of Section 3, Township 41 South, Range 42 East, Palm Beach County, Florida.

This instrument was prepared by:
 Jerald A. McLaughlin, P.L.S. 5269, in and for the offices of
 McLaughlin Engineering Company
 400 Northeast 3rd Avenue
 Fort Lauderdale, Florida 33301

LEGEND

- P.R.M. - indicates Permanent Reference Monument
- no. - indicates number
- sq. ft. - indicates square feet
- B.M. Elev. - indicates Bench Mark Elevation
- L.B. - indicates Licensed Business Number
- S.W. - indicates Southwest
- P.B. P. - indicates Plat Book & Page

LEGEND

- ⊕ - indicates centerline of Right - of - way
- O.R., P., - indicates Official Record, Page
- R - indicates Radius
- L - indicates Arc Length
- △ - indicates Central Angle (Delta)